

BROADBAND PROPAGATION

Antenna Design & Supply

1-3 Adelaide Rd. Echunga
PO Box 529 Echunga
South Australia. 5153

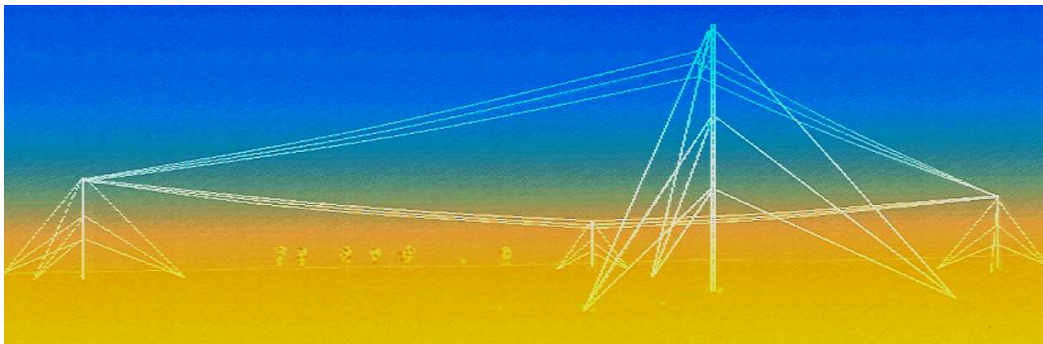
Phone: (08) 8388 8132
Fax: (08) 8388 8536
Intl.Phone: (618) 8388 8132
Intl.Fax: (618) 8388 8536

ABN: 84 232 273 647

E-mail: sales@broadbandpropagation.com
Web: www.broadbandpropagation.com

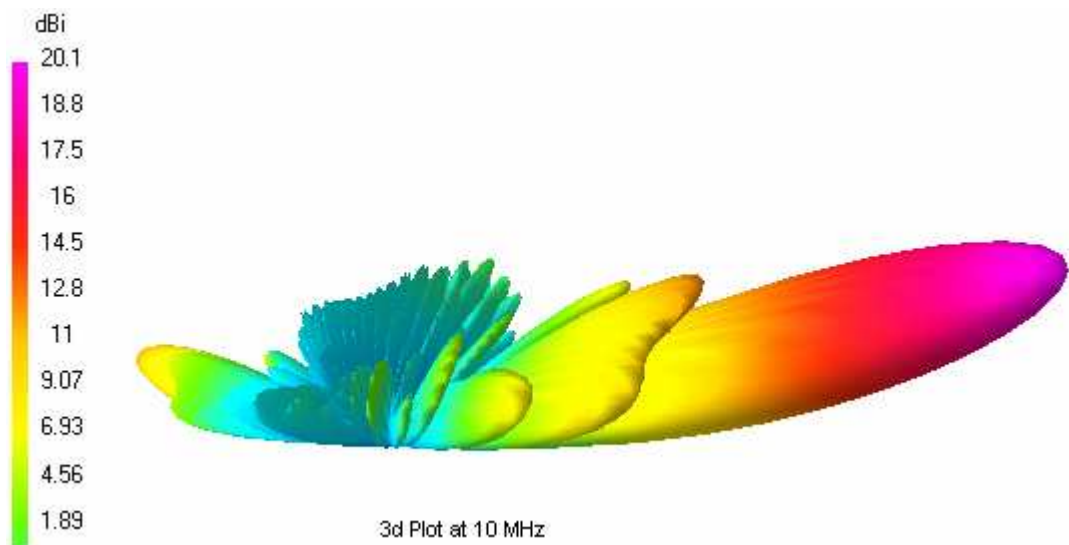
HF BROADBAND RHOMBIC ANTENNA

Model: BPRH-1.6-30



Rhombic antennas have high directional gain and low take-off angles and are best suited to long distance, point to point communications. Rhombic antennas suited to operation down as low as 1.6 MHz are large. The BPRH-1.6-30 requires four masts but installation of the antenna itself is simple and can be carried out without specialist skills. Long term maintenance requirements are low.

Our HF Rhombic range offer a cost effective answer for permanent base stations where low take-off angle, and high directional gain is needed, with good radiation efficiency.



Specifications: BPRH-1.6-30

Electrical

Frequency Range: 1.6-30 MHz

VSWR: Better than 2.0 : 1 across band

Main Lobe

Freq. MHz	Gain dBi	Take-off Angle °	Power Efficiency %
1.6	3.0	38	47
2	5.2	35	79
5	13.9	20	79
10	20.1	12	81
15	22.0	8	82
20	23.9	6	80
25	23.0	5	79
30	20.5	4	79

Polarisation: Horizontal

Power Rating: Antenna only, Max. 30 kW Average, 60 kW PEP,
Overall rating dependant on ratings of Balun and Termination pair
Which are available from 1-20 kW

Input Impedance: 50 ohms

Input connection: Dependant on balun power rating

Mechanical

Mast Height: 30m

Overall length: 620m

Overall Width: 135m

Wind Rating: 150 km/hr

Construction

All metal materials are of high grade stainless steel or hot-dip galvanised steel.
Ceramic insulators used throughout.

General

The antenna is supplied with all fittings required for installation, masts are not included.
Masts may be quoted separately if you would like us to supply these also.
The antenna may be fed via coaxial cable to the tower mounted balun or can be fed via suitable
balanced open wire line from the transmitter "hut". Balun and termination requirements are dependant
on the power rating require for the installation and are available from 1-20 kW.

VERTICAL RADIATION PATTERNS

